

ARALUEN
BOTANIC PARK

VISITOR MAP

Legend

- Acrod Parking
- Bus Parking
- Parking
- Toilets
- Free BBQ
- Potable Water
- First Aid
- Defibrillator
- Heritage & History
- Muster Point
- Emergency Exit
- Roses
- Camellias
- Herb Garden
- Roads
- Easy Paths (sealed)
- Gravel Paths
- Steps & Ramps
- Lawns

Walk Trails

- Contour Walk
(Grade 2 - Easy Walk)
- Flowers Walk
(Grade 3 - Moderate Walk)
- Heritage & History
(Grade 3 - Moderate Walk)



North

0 50 100m





ARALUEN

BOTANIC PARK

Araluen is a unique Botanic Park in a natural setting. Located within 59 hectares of West Australian native forest, our 14 hectares of developed gardens are home to thousands of plants that flourish in the rich soils and supportive micro-climate that is created in this valley in the Perth Hills.

Originally established as a holiday camp for members of the Young Australia League by founder J.J. "Boss" Simons in 1930, we have a rich history. Experience this for yourself as you stroll through terraced gardens and discover the jarrah pergola shelters dating back to our origins. Under these pergolas and near the log cabins you will find panels detailing their unique history.

Wander along the paths and lose yourself amongst the abundant blooms and natural beauty of the Park. As you sit back and enjoy the spectacular surrounds, listen out for the sounds of the many species who call our Park home. Be mindful that we live amongst nature and share our wonderful gardens with an abundance of creatures great and small. Keep an eye out for the signs to alert you of seasonal movements of birds of prey, snakes, possums, lizards, frogs, and more. Some may even pause long enough for you to snap a quick picture!

The Park offers plenty of grassed areas for families to lay out a picnic rug and enjoy the landscape. Depending on the season, coffee and delicious treats might also be available in the Park. We recommend checking our website for details.

It is hard to get lost at Araluen but not impossible. If you find yourself unsure of your whereabouts head downhill to a creek and follow it down. This will take you to the Concourse.

Enter a digital realm of magical exploration, chasing fairies and catching frogs using our new Augmented Reality filters. Simply scan the QR code below to find out more via Facebook Messenger.

Our staff and volunteers are keen to ensure you get the most out of your visit. Please don't hesitate to ask for assistance.

We hope that you enjoy your visit!

SEASONAL HIGHLIGHTS



From mid-August to early October, experience the magic of an Araluen springtime with the spectacular kaleidoscope of colour created by the 150,000 tulips that bloom throughout the annual Springtime Festival. The dates of the Festival vary each year - check our website for updates!



An International Garden of Excellence for camellias, Araluen's collection of over 230 picture-perfect varieties are not to be missed from April to October.



With summer comes a spectacular display of sunflowers - a selection of cheerful varieties make for the perfect selfie opportunity throughout the summer months.



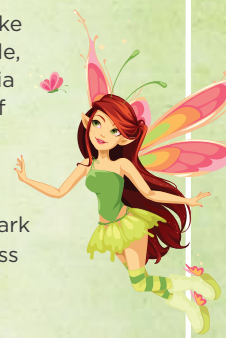
Ornamental blossom trees like springtime cherry, pear, apple, and plum, to summer wisteria put on a delightful display of colour throughout the year.



October - May is the best time to stop and smell the fragrant blooms of the 3,000 rose bushes that fill the Park! One of the world's largest collections of tea roses delights throughout the warmer months.



Autumn tones blanket the Park with splashes of colour across deciduous trees from April.



Email: info@araluenbotanicpark.com.au | **Phone:** (08) 9234 2200

araluenbotanicpark.com.au |   [@araluenbotanicpark](https://www.instagram.com/araluenbotanicpark)



**EXPERIENCE AUGMENTED
REALITY NOW**



 **SCAN ME**

